
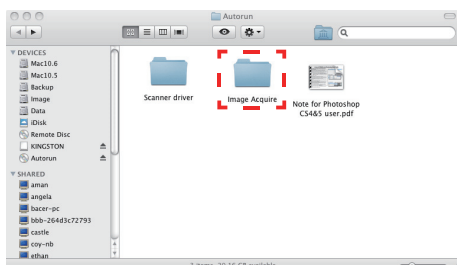


Scanning using Image Acquire software on Apple Mac OS

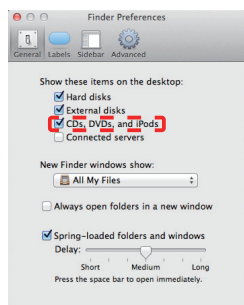
Image Acquire software can be manually installed to synchronize the scanner with the TWAIN-compatible software.


Installing Image Acquire software

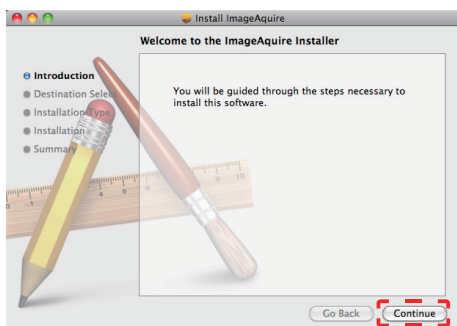
1. Insert the software Installation CD into your CD-ROM drive. An  **Autorun.iso** icon appears on the screen. Double-click on the icon to open the below window.



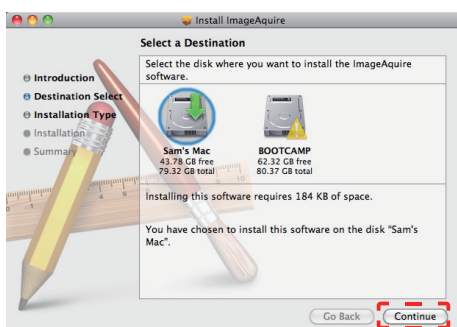
Note: If you can not see the  **Autorun.iso** icon on the desktop, go to **Finder > Preferences** to enable the display of the item.



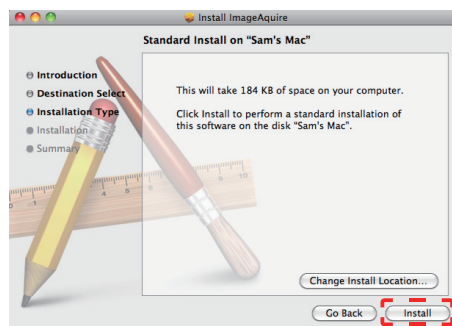
2. Double-click **Image Acquire** folder, and then double-click  **Image Acquire** icon to start the installation wizard. Click **<Continue>**.



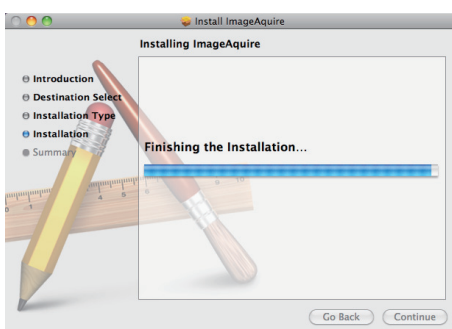
3. Select a destination to install the **Image Acquire** (if more hard disks available). Click **<Continue>**.



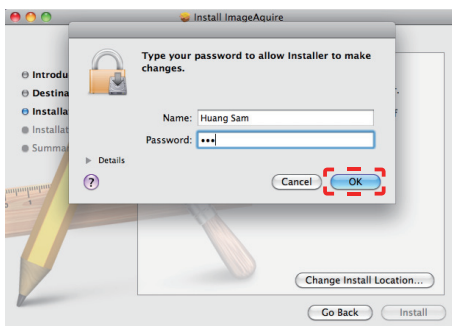
4. Once the destination has been selected, click **<Install>** button to continue the installation procedure.



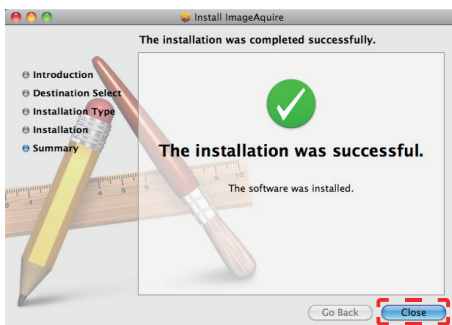
5. Please be patient, the installation procedure will take a while.



Note: A reminder window will pop-up on the screen if you have set a password on your computer. Enter the password and then click **<OK>** to continue the installation procedure. (For the password setting, refer to your Mac's manual.)



6. Click **<Close>** when the installation procedure is complete.



7. The scanner is now ready for use.

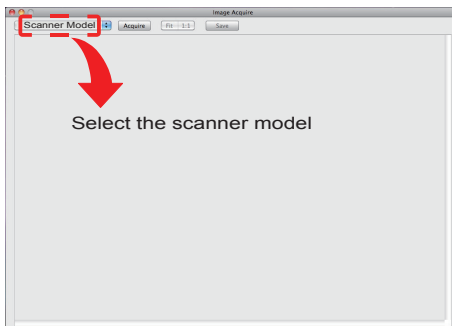
Acquiring images

1. To enable the **Image Acquire**, double click the scanner icon from Mac's Applications folder.

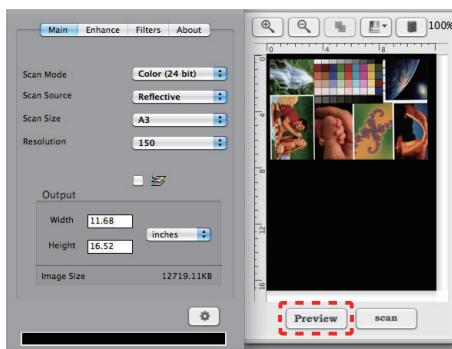


Note: The scanner icon may vary depends on scanner model.

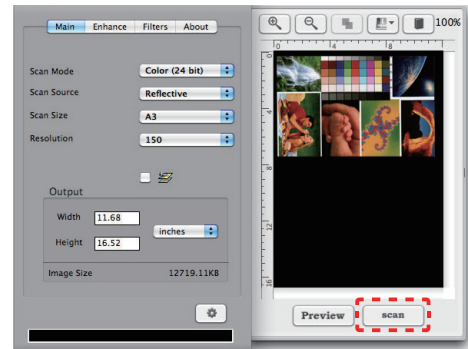
2. Choose the respective scanner model from the TWAIN Devices menu, and then click the **<Acquire>** button to bring up the TWAIN window.



3. Place the photo or document on the scanner.
4. Click **<Preview>** button to pre-scan the photo or document.

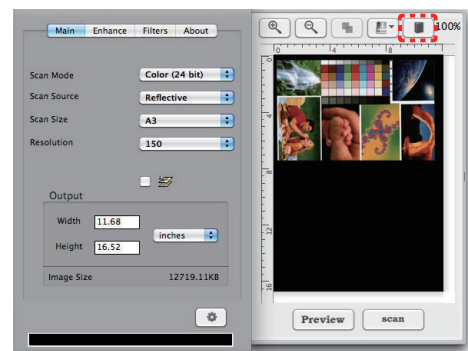


5. Set the scan area to be scanned, and then click **<Scan>** button.



Note: For more scanning operations, refer to the user manual in the software installation CD.

6. Click the **<Exit>** button to exit the TWAIN window when the scanning is complete.



7. To save the scanned image, click **<Save>** button in the Image Acquire window to bring up the save window.
8. Type the file name, select the desired directory, and choose a file type. Then click **<Save>** to save the scanned images.

